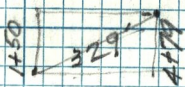


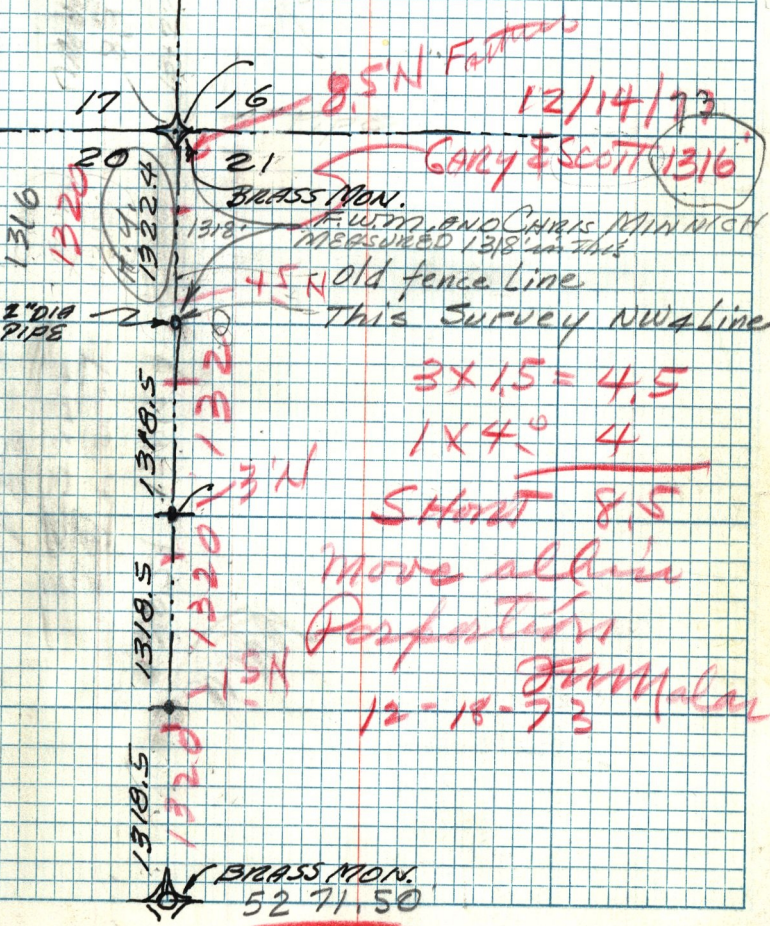
Vertical angle $21^{\circ}35'$ between 1+50 and 4+79
 Marker at top of hill



$329 - 305.9 = 23.1$

$13 + 455 - 23.1 = 13 + 22.4$

Monument east of old fence corner



8.5' N. FENCE

12/14/73

GARY & SCOTT 1316

BRASS MON.

F. W. M. AND CHRIS MINNICH
 MEASURED 1318' IN THIS

45' N. Old fence line

This Survey NW 4 Line

$3 \times 1.5 = 4.5$

$1 \times 4 = 4$

SHORT 8.5

move all in
 Perfection

12-18-73
 F. W. M. & CHRIS

BRASS MON.
 52 71.50